

Press machine

- Accessories-XRF

-

I . Manual Power Press machine

FFMP-15T
FFMP-24T
FFMP-40T
FFMP-60T
FFMP-100GT
FFMP-150T

II . Automatic Press machine

ZHY-401
ZHY-601

III . Accessories

Plastic loop die
Boric acid die
Steel loop die
Aluminum cup die

Manual Power Press machine



FFMP-15T



FFMP-24T

| Type | FFMP-15T | FFMP-24T | FFMP-40T | FFMP-60T | FFMP-100T | FFMP-150T |
|--------------------------------|--------------------|--------------------|--------------------|--------------------|--------------------|----------------|
| Maximum pressing force | 0~15T | 0~24T | 0~40T | 0~60T | 0~100T | 0~150T |
| Piston diameter | 87mm | 87mm | 125mm | 150mm | 200mm | 200mm |
| Piston rise | 0~20mm | 0~20mm | 0~50mm | 0~50mm | 0~50mm | 0~50mm |
| Working room | 140*140 *150mm | 94*94*180mm | 180*100 *230mm | 220*130 *280mm | 220*200 *280mm | 260*250 *280mm |
| Pressure stability ≤ | 1Mpa/5min | 1Mpa/5min | 2Mpa/5min | 2Mpa/5min | 2Mpa/2min | 2Mpa/2min |
| Dimension | 280×210 × 500mm | 280×210 × 500mm | 350×260 × 620mm | 420×280 × 720mm | 480×260 × 800mm | 506×300 ×840mm |
| Weight | 36kg | 40kg | 100kg | 140kg | 200kg | 270kg |

Automatic Press machine

1.FFAP-401

2.FFAP-601



Press machine

ZHY series press machine is the ancillary equipment for X-ray generators. With integrated tool pressuring, available in the boric acid, steel ring, aluminum cup, plastic ring, and low-pressure polythene pressuring type. Unique **the automatic slowly-compression and slowly-decompression program** is propitious to samples up to grade. May substitute the overseas similar product. A key operation causes to press to become ease.

Controls the power source completely uses low pressure 24V, the work is safer.

The automatic slowly-compression: When space schedule, press head fast upward; when press head close sample, the press head starts slowly upward until the pressure reaches the upper pre-set limit. Like this namely may squeeze out in the air in the sample, also may cause the sample stress to be even, enhanced has pressed quality.

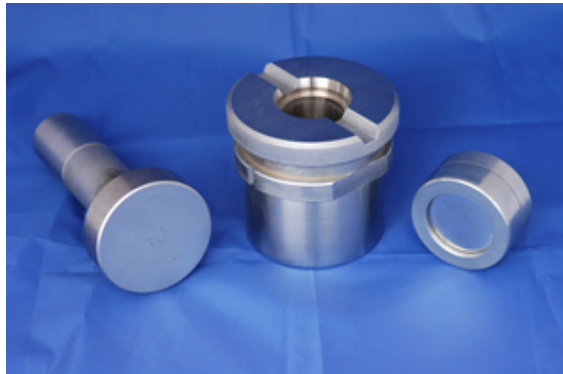
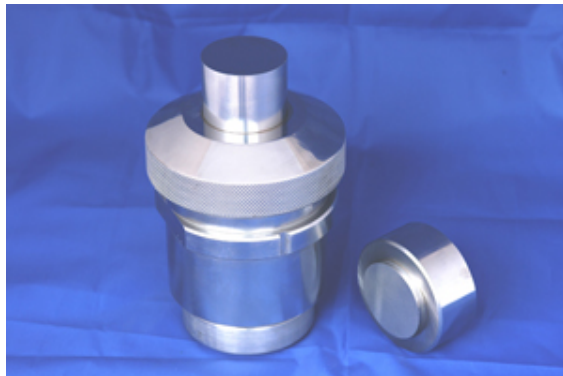
The automatic slowly-decompression: When keep presses the conclusion, starts the slow release of pressure, press head slow downward. (Because in presses time, press head and between sample surface vacuum productions, if discharge head fast downward, Can pull disperses the sample.) After the press head leaves the sample surface, press head fast downward, Proposes efficiency.

Because the automatic slow compression, automatic slowly-decompression, are a type operation, completes automatically, had guaranteed press quality the uniformity.

| Type | FFAP-401 | FFAP-601 |
|----------------------------------|--|----------------|
| Maximum pressing force | 40 Ton | 60 Ton |
| Press tool | boric acid, steel ring, aluminum cup, plastic ring, and low-pressure polythene | |
| Space between column | 220mm | |
| Maximum course of the press head | 100mm | |
| Keeping-pressure time | 0~999 seconds | |
| Power supply | AC380V, 3-phrace+earth | |
| Rated load | 1.3kw | |
| Dimension | 600×500×1150mm | 660×530×1180mm |
| Weight | 350kg | 420kg |
| Ambient temperature | 5~40℃ | |

Accessories

Plastic loop die/Boric acid die/Steel loop die/Aluminum cup die





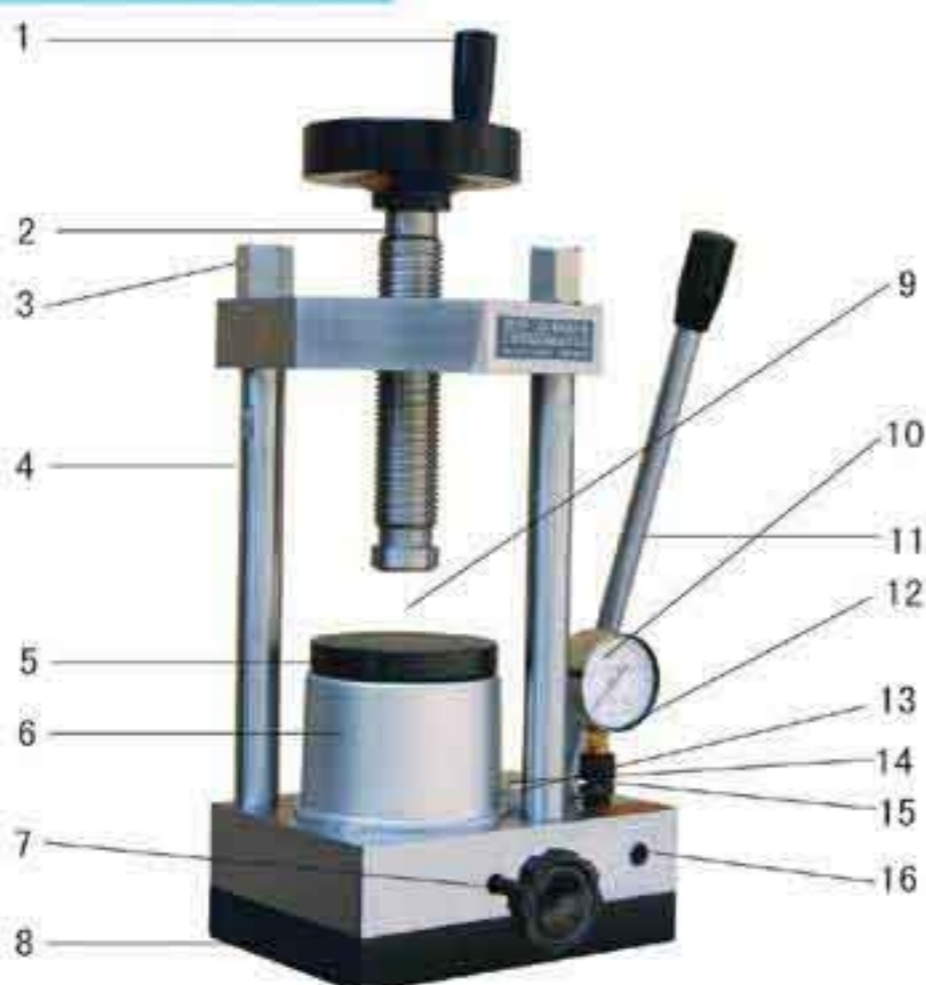
Powder Tablet Compression Machines

Key Technical Index

| model | pressure | diameter of piston | largest journey of piston | diameter of worktable | work space | stability of pressure | weight | dimension |
|----------|----------------|--------------------|---------------------------|-----------------------|---------------|-----------------------|--------|---------------|
| FFMP-15T | 0-15T(0-25MPa) | 87mm | 20mm | 98mm | 140×140×150mm | ≤1MPa/5min | 36kg | 280×210×500mm |
| FFMP-24T | 0-24T(0-40MPa) | 87mm | 20mm | 98mm | 94×94×180mm | ≤1MPa/5min | 40kg | 280×210×500mm |

Notice: Work space can be adjusted upon request of customers.

Structure

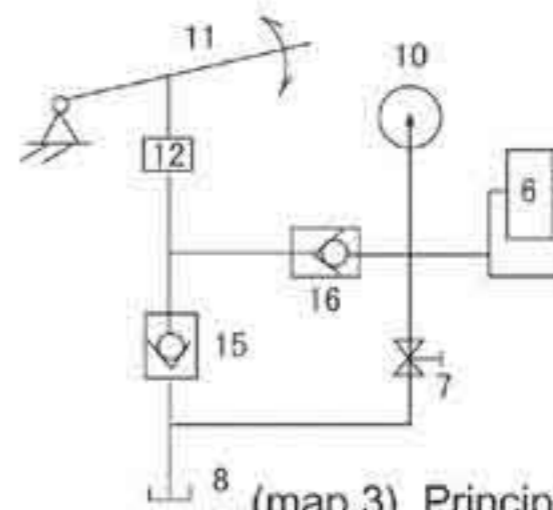


(map 1) FFMP-15T



(map 2) FFMP-24T

- 1. handwheel
- 2. master screw
- 3. fixing nut
- 4. standing post
- 5. worktable
- 6. piston
- 7. oil drain valve
- 8. oil pool
- 9. mould
- 10. manometer
- 11. hand grip
- 12. post plug pump
- 13. oil injecting bolt
- 14. orientation bolt
- 15. oil suction valve
- 16. oil outflow valve



(map 3) Principle of Oil Channel

Principle of Oil Channel (refer to map 3)

During work, oil drain valve 7 is closed. When hand grip is swung, oil is suck from oil pool 8 through oil suction valve 15 and then extruded into piston vat 6 through oil outflow valve. During this process, great quantity of energy is stored and high pressure oil also formed with data indicated on manometer 10. When oil drain valve 7 opens, energy is released.

Procedure

Screw off oil injecting bolt 13, screw on oil drain valve 7 clockwise, then put mould on the center of worktable 5, screw down master screw 2, swing hand grip 11 forward and backward so as to achieve needed pressure. After pressure preservation, unfasten oil drain valve 7 anticlockwise and remove mould.

Automatic Press Machine

ZHY series press machines is utilizing integrated mold pressurizing technology, can be used with press tools for boric acid, steel ring , aluminum cup ,plastic ring and low pressure polyethylene pressurizing.

Our unique **slow pressurization and slow decompression** technology is ideal to produce high grade samples.

Automatic slow pressurization ; When the space between press head and the sample is in excess , press head moves upwards quickly, while slows down and goes into slow pressurization while the press head approaches to sample, until it reaches to upper set limit. This process makes the air to be removed out, and ensures uniform pressurizing, and enhances the overall sample quality.

Automatic slow decompression; When slow pressurization is completed, the press starts to release the pressure slowly, and pressure head moves downward automatically. Without this unique slow decompression technique, vacuum between the press head and the sample is unavoidable due to fast movement, which yields pulling and uneven sample dispersing.

When press head is not in contact with sample any more, then the press head falls quickly, to avoid unnecessary waiting time.

ZHY -401A and ZHY-601A models press machines are equipped with PLC (Programmable Control) to control and monitor the status accurately.



| Type | FFAP-401 | FFAP-601 | FFAP-401A | FFAP-601A |
|--------------------------|---|----------|----------------|-----------|
| Maximum pressure | 400kN | | 600kN | |
| Press tool | Boric acid, steel ring, aluminum cup, plastic ring and low-pressure polythene | | | |
| Interval between columns | 220mm | | | |
| Plunger stroke | 100mm | | | |
| Holding-pressure time | 0~999 seconds | | | |
| Control circuit | PCB | PLC | PCB | PLC |
| Power supply | AC380V, 3-phrace+earth | | | |
| Rated load | 1.3kW | | | |
| Dimension | 600x500x1150mm | | 660x530x1180mm | |
| Weight | 350 kg | | 420 kg | |
| Ambient temperature | 5~40 °C | | | |

BEIJING KARALTAY SCIENTIFIC TRADING CO., LTD.

Room 1015, Beijing Research Institute of Mechanical & Electrical Technology, No.18 Xueqing Road, Haidian District, Beijing, China 100083 Tel No. : 0086-10-62023948 / 62016954 Fax No.: 0086-10-62016954
www.karaltay.com